

HISTORIC ROUTE 20

Iowa



A guide for the implementation of Historic Route 20 signs in Woodbury County Iowa

Prepared by the Historic US Route 20 Association Inc. © March 2019

Introduction

The Historic Route 20 Association Inc, a 501 (c) 3 nonprofit organization in the State of Iowa, has been actively working to designate the original 1926 alignments of Highway 20 from Dubuque to Sioux City as *Historic Route 20, Iowa*. This would be, once completed, an Iowa DOT State Scenic Historic Auto Route. This study will offer the recommendation of the organization as to the placement of the Historic Route Wayfinding Signs.

Objective

To promote travel & tourism and economic development by placing wayfinding signs (Historic Markers) on the original 1926 alignments of US Route 20 in Iowa.

Goals

To work with the 13 counties and 35 towns and cities on the former US 20 in Iowa to erect Historic Route 20 signs on their respective sections of highway by passing resolutions to support the Historic Route designation.

To increase travel and tourism on the former US 20 across Iowa

Bring people back into the small towns

To connect with other communities and states that are on US Route 20

To make Historic Route 20 a tourist destination, similar to the iconic Route 66

Project Implementation

The Cities of Cushing, Correctionville and Sioux City have passed resolutions stating support for the historic route within their borders. Atta

The City of Merville took no action as the City considers the original alignment as being in Woodbury County, outside of the city boundary.

The 1926 alignment of Highway 20 does not enter the City of Lawton's boundary.

The Historic Route 20 Association refers the user of this study to the Historic Route 20 Iowa Study completed in 2017 for additional information.

This Guide and corresponding maps may be downloaded at – www.historicUS20.com/iowa.html

**A RESOLUTION TO IDENTIFY THE FORMER ALIGNMENTS OF
U.S. HIGHWAY ROUTE 20
IN THE STATE OF IOWA
as
HISTORIC US ROUTE 20 (IOWA)**

The Iowa Department of Transportation requires all towns, cities and counties located along the former alignments of U.S. Highway Route 20 that are Public State Highways to submit a resolution to agree to the designation and placement of Historic Route 20 markers on the Public State Highway.

The Iowa Department of Transportation is also requesting all towns, cities and counties located along the former alignments of U.S. Highway Route 20 that are Local (Town, City or County) Maintained Highways to submit a resolution to agree to the designation and placement of Historic Route 20 markers on their respected maintained highways to ensure complete continuity of the designated Historic Route. Locations where the Historic Route is on a local highway do not require the DOT designation for placement of signs, the determination is based at the local level.

This resolution would request the Iowa Department of Transportation, upon receipt, to identify and designate that section of former U.S. Highway Route 20, as determined by the 1927 State of Iowa Highway Map, that is still a publicly maintained highway and that is of interest to the applicant, Historic US Route 20 (Iowa).

Costs covering the purchase and placement of the Historic Route markers are to be delegated to the Historic Route 20 Association and not the Iowa Department of Transportation – unless stipulated by Iowa DOT. The passing of this resolution does not require any financial commitment from the county.

1927 Iowa State Highway Map Link: <http://www.iowadot.gov/maps/msp/historical/pdf/1927-front.pdf>

Contacts:

The Historic US Route 20 Association
Bryan Farr – President
108 Skyline Trail
Chester, MA 01011
(617) 733-5796
btfarr@historicUS20.com

JayJay Goodvin
Executive Director
PO Box 787
Iowa City, IA 52244
(319) 855-8267
jayjay@historicUS20.com

Brandy Ripley
Sac County EDC
PO Box 327
Wall Lake, IA 51466
(712) 664-2940
briley@sacountyiowa.com

A Resolution of the County of Woodbury, Iowa - Declaring Support and Intent of the Placement of Historic Route 20 Signage on the County/State Maintained Road

WHEREAS, U.S. Highway Route 20 was created in 1926 from Boston, MA to Yellowstone National Park, WY; and

WHEREAS, By 1943, U.S. Highway Route 20 was extended to Newport, OR – a distance of 3,365 miles; and

WHEREAS, U.S. Highway Route 20 extended 333 miles between Dubuque and Sioux City, Iowa; and

WHEREAS, U.S. Highway Route 6 was decommissioned in most of California in 1964, making U.S. Highway Route 20 the longest highway in the country; and

WHEREAS, Over the years, U.S. Highway Route 20 has conveyed commerce and pleasure travelers whose needs were met by nearby cities and counties; and

WHEREAS, The State of Iowa has been working since 1952, to relocate U.S. Highway Route 20 to a four lane highway; and

WHEREAS, Though largely supplanted by the four lane highway route, the original segment of U.S. Highway Route 20 remain, although most are no longer identified as such; and

WHEREAS, Former U.S. Highway Route 20 served as the main street of many Iowa cities and towns along its length and, though no longer designated as former U.S. Highway Route 20, these segments represent both state and local historic significance; and

WHEREAS, the Historic US Route 20 Association, Inc., is a nonprofit 501 (c)3 organization aimed to promote tourism and economic development along the original 1926 alignment of US Route 20; and

WHEREAS, The Historic Route 20 Association, Inc., provides historic route markers to act as a wayfinding tool to guide tourists and travelers on the 1926 alignment to a local agency; and

WHEREAS, Designation of a Historic Route and the permission of placement of historic markers on State Public Highways must come from the Iowa Department of Transportation; and

WHEREAS, Without formal designation, the history and contribution of these segments of U.S. Highway Route 20 to the development of the state would remain less known; and

WHEREAS, Recognition of these segments will foster the economic health and cultural preservation of small communities and towns located along the highway; and

WHEREAS, It is fitting that a means to designate these historic sections of former U.S. Highway Route 20 be established; now, therefore, be it

RESOLVED by the County of Woodbury, Iowa, hereby recognizes the original 1926 segment of former U.S. Highway Route 20 in the County of Woodbury, Iowa as *Historic Route 20 (Iowa)* for its historical significance and importance in the development of Iowa; and be it further

RESOLVED, The County of Woodbury, Iowa commits to the permitting and placement of Historic Route 20 Markers within its borders, including the State DOT Highway; and be it further

RESOLVED, That the Iowa Department of Transportation, upon receipt of this resolution by all interested local agencies along the original segment of U.S. Highway Route 20, to designate that section of highway as *Historic Route 20 (Iowa)*; and be it further

RESOLVED the Clerk of the County of Woodbury, Iowa transmit copies of this resolution to the Historic US Route 20 Association.

NOW, THEREFORE, BE IT HEREBY RESOLVED BY THE _____ of THE COUNTY OF WOODBURY, IOWA that we are in support of the recognition and designation of Historic Route 20 and the placement of Historic Route 20 Markers.

PASSED AND APPROVED this _____ of _____, 2019

_____	_____
_____	_____
_____	_____

- IowaDOT is requesting and requiring ALL towns, cities & counties where the historic alignment passed to submit a resolution to agree to place Historic Route 20 signs on their sections of highway, whether it is state maintained or local.
- The state is looking for continuity – if traffic is diverted from the current Route 20, the path back or across Iowa needs to be complete.
- IowaDOT will grant Historic Route status to the entire route if the required resolutions are received.
- Towns may put up signs without State approval on non IowaDOT highways. i.e. local, county, city roads with local permissions.
- Any IowaDOT maintained highways must wait until their designation is granted. i.e. Iowa 57, current US 20
- All signs and installation, including maintenance, will be the responsibility of the local entity interested and not IowaDOT.
- IowaDOT will only allow large signs on the State highways. (Smaller reassurance signs may be placed on local roads)

From: Crouch, Tim [<mailto:Tim.Crouch@iowadot.us>]
Sent: Friday, May 26, 2017 3:44 PM
To: Bryan Farr <btfarr@historicUS20.com>
Cc: Seward, Roxanne <Roxanne.Seward@iowadot.us>; Kretlow, Gary <Gary.KretlowJr@iowadot.us>; Wood, Craig <Craig.Wood@iowadot.us>; Lohrer, Chad <Chad.Lohrer@iowadot.us>
Subject: RE: Historic Route 20 - Iowa DOT

Bryan,

Thank you for the information on the Historic US 20 historic trail request. You may already have the administrative rule for this type of request, but if not I have attached a copy of the rule.

Typically, for named route requests we ask the applicants to start with the district representatives. However, since this request for Historic US 20 will cover the entire state, the initial submittal can be sent to me. I would like to receive just one complete submittal to include all items required by the administrative rule. This is slightly different than how we approached the request for the Historic US 6 designation from Dave Darby. I allowed him to process a section at a time as he got resolutions and interest from individual cities and segments. However, that became difficult to manage and I fear it may have ultimately been confusing to drivers as there was not a continuous Historic US 6 route to follow.

I have copied the District contacts as they will be involved once the approval is granted and signs are being installed on the state routes.

The information you provided in the link can serve as the background information and justification for the historic trail signing.

On the issue of the sign size, the administrative rule states the maximum size for the signs is 24"x30". I missed it in my review that the Historic US 6 signs were 24"x36". I would be willing to discuss/consider allowing the already purchased signs, but would like to see that all future signs meet this requirement.

Please review the attached rules and let me know if you have any questions. I look forward to reviewing your request for the designation of Historic US 20.



Thanks,
Tim

Please note that my e-mail address has changed: tim.crouch@iowadot.us



TIMOTHY D CROUCH, PE, PTOE
STATE TRAFFIC ENGINEER
OFFICE OF TRAFFIC AND SAFETY

iowadot.gov
Office: 515-239-1513

 Iowa Department of Transportation
 @iowadot

Maps and Appendices

The following maps were prepared by the Historic US Route 20 Association as an informational resource for Woodbury, IA and all interested parties in the designation of Historic Route 20.

The historic alignments are based on the 1927 Iowa State Highway Map and other local maps.

The location and placement of Historic Route markers listed in this study is suggested but may be changed based on local input and or regulations.

The Iowa DOT requires a complete and consistent route to ensure travelers and tourists do not get lost for the designation Historic Route 20 to occur.

Map notes: Open yellow circles indicate stand alone (no arrow needed) signage. Arrows indicate that a directional arrow is needed. Markers and arrows are placed on the side of travel.

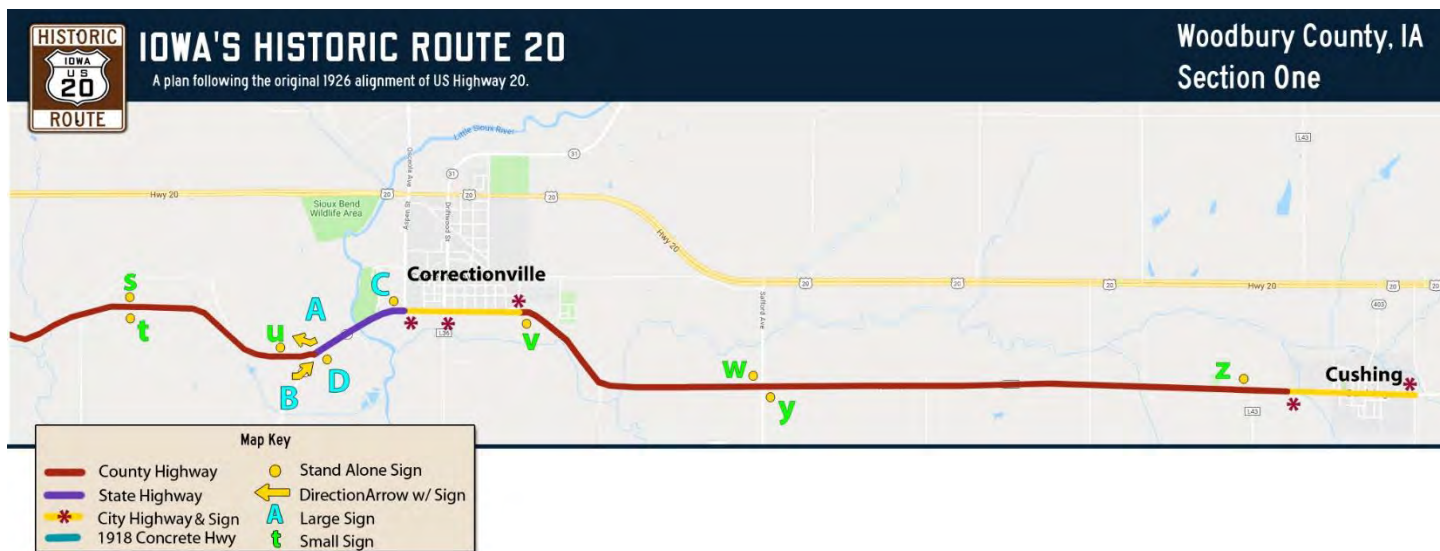
Section One – Eastern Woodbury County - With construction of the modern 4 lane highway complete across Iowa, the original alignment of Highway 20 connecting Ida County to Woodbury County has been eliminated. Currently Ida County L51 will be the connector to the Cushing City line. The City of Cushing has two signs in place at the city limits, denoted by an *.

Small reassurance signs are suggested between Cushing and Correctionville – primarily at County Route intersections.

Correctionville will place 3 signs within their city limits.

The connecting route from Correctionville and 160th (CR D20) is State Highway 31. Large signs are required with C & D being reassurance signage. A & B are directional arrows.

Signs u,t,s are reassurance only on County Route D20

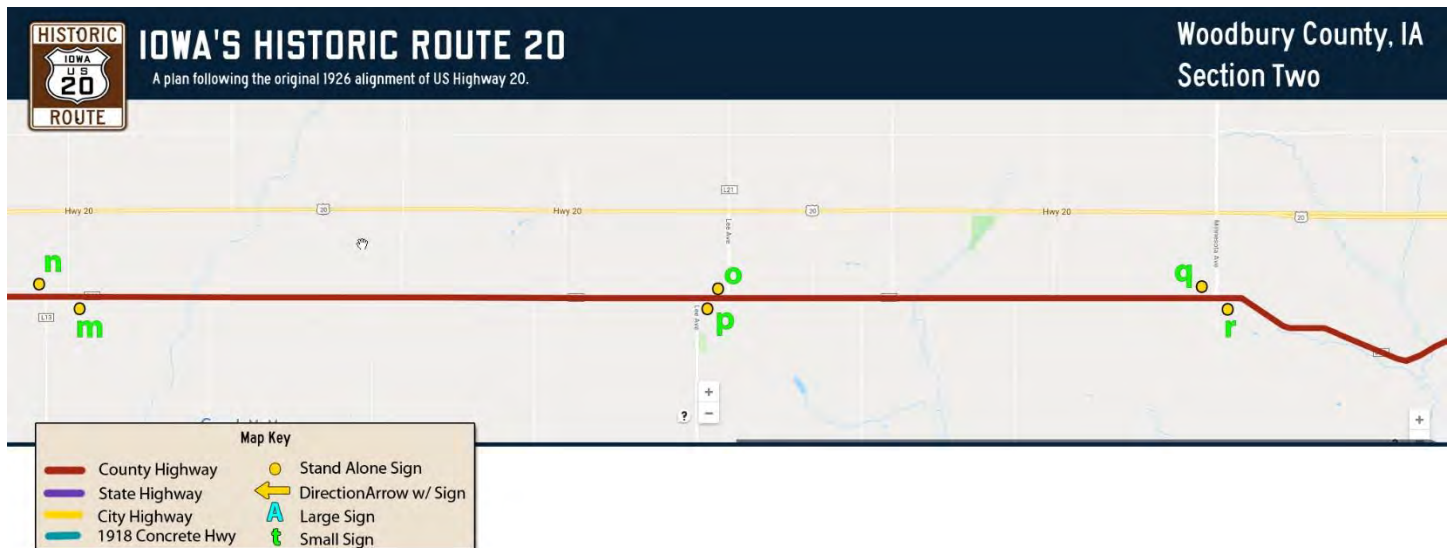


Map 1 - Google Map view of the proposed Historic alignment in Eastern Woodbury County, IA

Section Two – Mid-Eastern Woodbury County - This section of old Highway 20 is currently signed as County Route D-20. Reassurance signs are suggested to be placed at the intersections of other County Routes. Overall placement may be determined locally.



Photo 2: Small Historic Route 20 reassurance sign on Sac County Route D36 – placement by Sac County Highway Engineer.

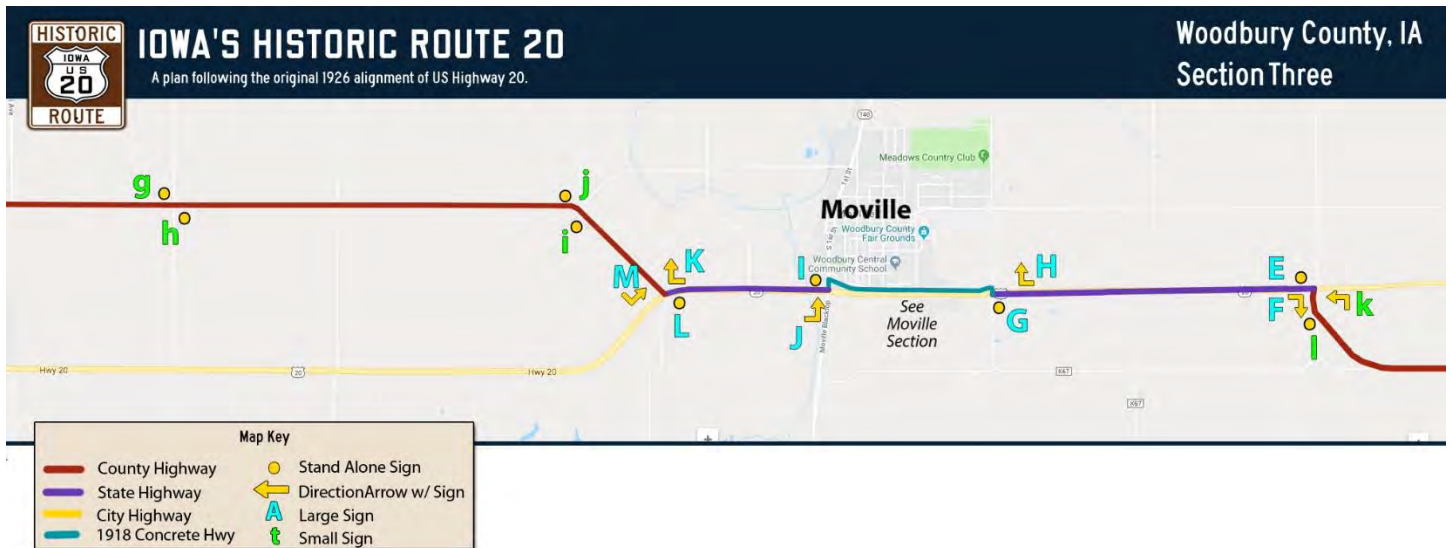


Map 2 - Google Map view of the proposed Historic alignment in Mid-Eastern Woodbury County, IA

Section Three – Mid-Western Woodbury County - County Route D-20 intersects with Modern Highway 20 as Ida Ave. Appropriate signage will be needed to guide at this intersection. Iowa DOT regulations require large signs on State Highway 20 with E being a reassurance sign for westbound traffic and F for eastbound traffic turning from State Highway 20. i is a reassurance on Ida. k indicates a turn onto State Highway 20.

See Merville Section

Reassurance sign I after Merville. K will indicate a right hand turn (WB) onto Garner Ave. L is the reassurance upon leaving Garner Ave. M is the turn for eastbound traffic onto State Highway 20. j,l,h,g are reassurance signs

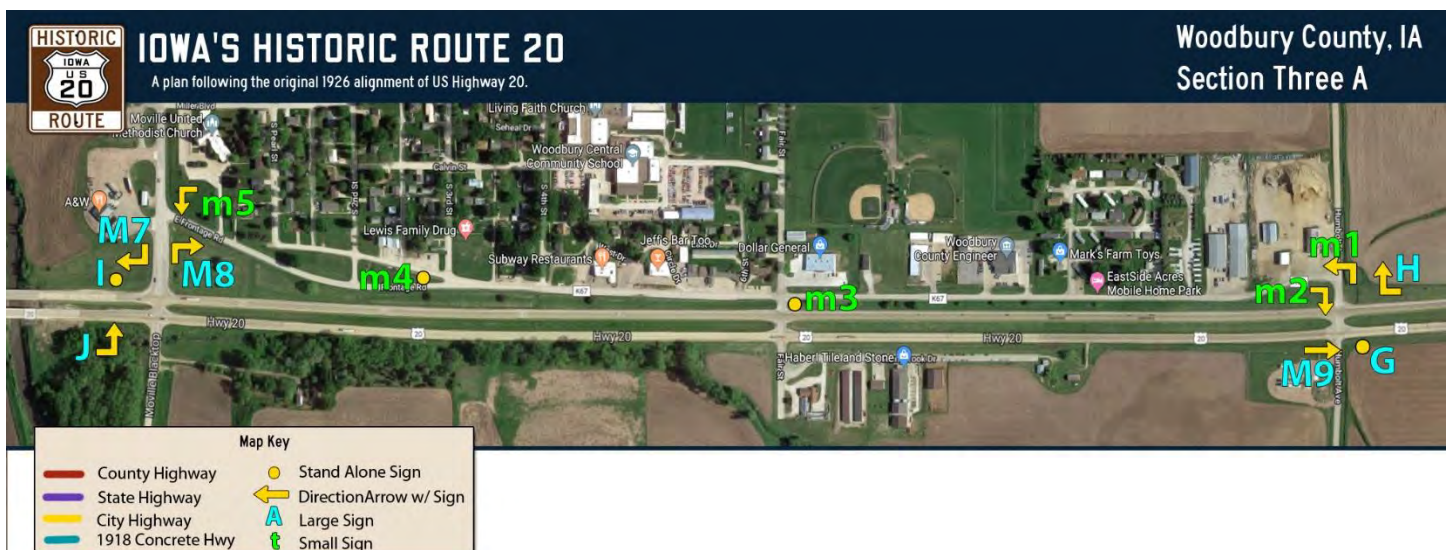


Map 3 - Google Map view of the proposed Historic alignment in Mid-Western Woodbury County, IA

Section Three A – Merville The City of Merville has indicated to the Historic Route 20 Association that the section of highway known as Frontage Rd is the property of Woodbury County. Therefore, this study is acting upon that communication.

The road known as Frontage Road is the last remaining section of 1918 Concrete highway along Highway 20 in Iowa.

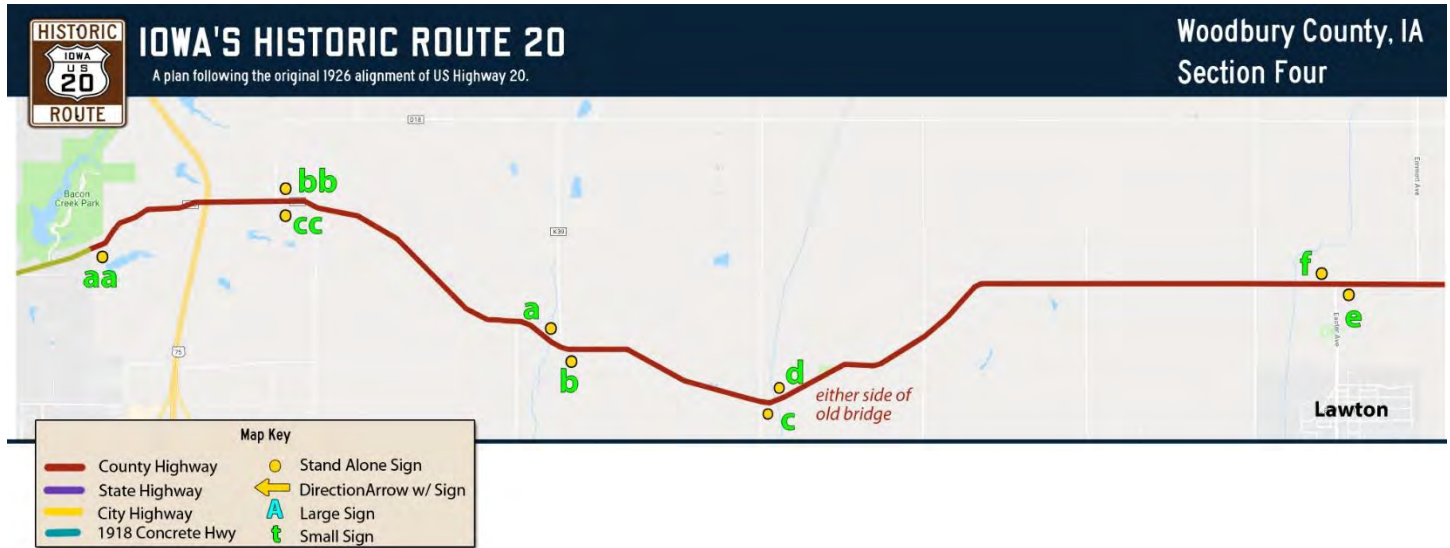
The Frontage Road section in Merville requires 10 additional signs to navigate this small section of the original highway. The Historic Route 20 Association strongly suggests that this section be included for the Historic Route designation. However, the implementation of this section may be put on hold for a second phase revisited in an additional year.



Map 4 - Google Map view of the proposed Historic alignment in Merville, IA

Section Four – Western Woodbury County (excluding the City of Sioux City) - This section of highway is known as Correctionville Road and was the main highway until 1954. All signage is suggested to be small reassurance at County Route intersections and with c,d at the old Big Whiskey Creek bridge

The first reassurance sign should be placed at aa – the Sioux City city line.



Map 5 - Google Map view of the proposed Historic alignment in Western Woodbury County, IA to the Sioux City city line.

Signs Needed For Woodbury County

	Large	Small	Arrows
Without Merville	11	28	6
With Merville	16	33	14

A sign order form accompanies this study for informational purposes.

Signage

The Historic Route 20 wayfinding signs are provided by the Historic US Route 20 Association. Historic Route 20 contracts to an independent highway sign maker who has provided all of our signage and for the Iowa Route 6 Tourist Association.

Historic Route 20 has contacted Iowa Prison Industries for a price quote, as they have been a resource used in the state. Their pricing was approximately 40% higher and the specifications for the signs could not match in quality of the signs Historic Route 20 provides. This information will be provided upon request.

The signs are 3M™ Diamond Grade™ DG³ Sheeting on the front on predrilled highway grade aluminum.

This signage and design and size has been approved by the Iowa Department of Transportation.



Historic Route 20 Signs

Large - 24" x 30" *

Small - 12" x 18"

Highway Grade Signs

Highway Grade Alluminum Back

3M™ Diamond Grade™ DG³ Sheeting

Pre-Drilled

*Iowa DOT size specification for all State Highways.
Small signs allowed on City, County roads



Large Sign on the Historic Route in the City of Cushing, Iowa.

Example of small signage placed in Sac County, Iowa as a reassurance sign.





THE HISTORIC US ROUTE 20 ASSOCIATION – IOWA

PO Box 787 Iowa City, IA 52244 (319) 855.8267 jayjay@historicUS20.com

Business, Passport, Town/City Membership Application (October 2018)

2019 Memberships for Inclusion in our Travel Guide due March 1, 2019

As a private, nonprofit institution, membership is what drives the Historic US Route 20 Association to success on its mission to preserve and promote the many great sites along US Highway 20 in Iowa.

We wish to become a Business CoC/VB Town/City Member

Membership Fee _____ **\$50.00/yr** **Lifetime Fee** _____ **\$250.00** (Iowa only)

Corporate Sponsor _____ \$ _____

_____ As part of our membership, I would also like to purchase HISTORIC US ROUTE 20 sign to place at my business, organization or in my town.

_____ As part of our membership, I would like to participate in the HISTORIC US ROUTE 20 *Passport & Stamp Program*
Please Use Additional Passport Form

IOWA SIGNS:	No.	Size & Price	Total
INDICATE NUMBER REQUESTED		Small 12" x 18" \$35 each	\$
Spellings and designs listed below are how they will appear on your sign. <i>Please allow 4-6 weeks for delivery.</i>		Large 24" x 30" \$125 each	\$

As a Business Member, you will have your business placed on our website, future mobile app and travel guide book for promotional purposes.

A standard insert will be placed in our annual brochure. You will have the option to purchase an advertisement.

See Member Benefits on Reverse

Business Name/Town Name

Address

City, State, Zip

E-mail and Phone

_____	Card Info
_____	Exp / CCV
_____	Zip Code

Tell us about your business or enter your payment method above

Signature

Date

Total Amount Enclosed \$ _____

Remit payment to address above or call for online payment

Yearly Memberships are Valid one Year from Receipt of Order

The Historic US Route 20 Association is a 501 (c) (3) organization. Your membership in tax deductible. IRS EIN # 46-0837490

Membership Details (Updated October 2018)

As a private, nonprofit institution, membership is what drives the Historic US Route 20 Association (known as Association) to success on its mission to preserve and promote the many great sites along Historic US Route 20.

As a thank you, Historic US Route 20 members receive a number of valuable benefits mentioned below! We invite you to take part in this journey, and help sustain this important nonprofit organization by becoming a member today.

Under the Bylaws of the Historic US Route 20 Association membership is defined as:

All individuals or entities who have been accepted for membership by the Board of Directors of the corporation and who are current in the repayment of their dues shall be deemed "active members" of the corporation. Active members shall be accorded full voting rights and other benefits afforded to members of the corporation in good standing. Hereafter, when only "member" or "members" is/are referred to in these bylaws, "active members" and "lifetime members" and "charter members" shall be referred to, and not honorary members. The Board of Directors of the Corporation may also create a sub-class of active members designated "charter members" of the corporation who shall be those individuals or entities would have made a greater contribution to the corporation than standard active members, as defined by the Board of Directors and who shall receive corporation recognition for their efforts as determined by the Board of Directors. Membership in the Corporation shall not be limited to "individuals", but may also include profit or nonprofit corporations, general or limited partnerships, associations, or other entities. As referred to herein, any non-individual member is generally referred to herein as an "entity".

When applying for membership you may apply for the following which best describes your status:

Standard Member - A standard member is an entity, who may apply for a basic membership with the Historic US Route 20 Association. Membership renewal is due annually from the time of receipt. As a Standard member, you will be entitled to the following benefits:

Standard Advertisement – Your location will be linked and placed on our web site and a 1"x1.5" advertisement in our annual brochure.

100+ Brochures – You will receive a minimum of 100 brochures for your location. Additional brochures may be purchased.

Travel Guide – Your location will be placed in our upcoming Travel Guide Book in text form and located on a regional map.

Access to Paid Web content - you can access content on our paid website, including maps, geo-location travel pages and content that will detail all aspects of traveling Historic Route 20. Including maps, original routes, points of interest and see participating member locations that at accept the Route 20 Passport as you travel.

A subscription to our newsletter: TWENTY - Upon receipt of membership dues, you will receive the quarterly newsletter of the Historic US Route 20 Association "TWENTY".

Calendar of Events – You will be able to put your event on our calendar

Participate in the Route 20 Passport Program - See info sheet

A Historic Route 20 Sign Study plan for your town

Travel Guide Book and Brochure Advertisement Rates

By becoming a member of the Historic US Route 20 Association, you will have the option to purchase a larger advertisement space for our printed and distributed 2019 Brochure and the 2019 Historic Route 20 Travel Guide Book.

As a member, The Historic US Route 20 Association may solicit your business, company, Coc, VB, etc for a separate advertisement.

You will receive 1 Box or 1000 Brochures^ for your location. Larger quantities for an additional cost. Travel Guide Books may be purchased for resale separately.

Size	Brochure	Travel Guide Book	Member Cost	Non- Member
Standard	1"x1.5" BOTH Logo/Address Only	Text only – map placement	Included	N/A
Eighth Panel	1.75" x 2 or 4" x 2.375"	2.25" x 2	\$150	\$150
Quarter Panel	1.75" x 4 or 4"x 4.875"	2.25" x 4"	\$250	\$275
Half Panel Page	3.5" x 4 or 8" x 4.875"	5.5" x 4"	\$500	\$650
Full Page	3.5"x 8" or 8" x 10"	5.5" x 8"	\$1000	\$1200

**Brochure Size for 2019 will be determined by the Net Memberships and paid advertisement received.

Your membership ad will appear in both our Iowa Guide and our national guide.

Distribution of Brochures will occur in April 2019.

^ If your location will not go through 1000/year, please let us know

Historic Route 20 Association Sign Commitment Agreement

Woodbury County has asked that Historic Route 20 Association be financially responsible for the purchase of signage for this project. Woodbury County will facilitate the placement and erection of the signage once received.

The Historic Route 20 Association agrees to Woodbury County's request with the following conditions.

Historic Route 20 can and will actively seek out funding for signage in Woodbury County by means including, but not limited to:

- local, county, state or federal grants
- private donations
- fundraising
- corporate sponsorship*

Historic Route 20 upon receipt of the passed resolution will seek out the necessary funding for this project in Woodbury County. Historic Route 20 will have one year from receipt of the resolution to provide signage in one shipment to the Woodbury County Highway Engineer.



Bryan Farr
President – Historic Route 20 Association
March 12, 2019

Contacts:

Bryan Farr

President – Historic US Route 20 Association

108 Skyline Trail

Chester, MA 01011

(617) 733.5796

bfarr@historicUS20.com

Brandy Ripley

Director – Sac County Economic Development & Tourism

PO Box 327

Wall Lake, IA 51466

(712) 664-2940

briley@saccountyiowa.com

www.historicUS20.com/iowa.html

www.facebook.com/HistoricRoute20IA

JayJay Goodvin

Executive Director – Historic Route 20 Iowa

PO Box 787

Iowa City, IA 52244

A Resolution of 2017:13, Iowa - Declaring Support and Intent of the Placement of Historic Route 20 Signage on the Town/City/County/State Maintained Road

WHEREAS, U.S. Highway Route 20 was created in 1926 from Boston, MA to Yellowstone National Park, WY; and

WHEREAS, By 1943, U.S. Highway Route 20 was extended to Newport, OR – a distance of 3,365 miles; and

WHEREAS, U.S. Highway Route 20 extended 333 miles between Dubuque and Sioux City, Iowa; and

WHEREAS, U.S. Highway Route 6 was decommissioned in most of California in 1964, making U.S. Highway Route 20 the longest highway in the country; and

WHEREAS, Over the years, U.S. Highway Route 20 has conveyed commerce and pleasure travelers whose needs were met by nearby cities and counties; and

WHEREAS, The State of Iowa has been working since 1952, to relocate U.S. Highway Route 20 to a four lane highway; and

WHEREAS, Though largely supplanted by the four lane highway route, the original segment of U.S. Highway Route 20 remain, although most are no longer identified as such; and

WHEREAS, Former U.S. Highway Route 20 served as the main street of many Iowa cities and towns along its length and, though no longer designated as former U.S. Highway Route 20, these segments represent both state and local historic significance; and

WHEREAS, the Historic US Route 20 Association, Inc., is a nonprofit 501 (c)3 organization aimed to promote tourism and economic development along the original 1926 alignment of US Route 20; and

WHEREAS, The Historic Route 20 Association, Inc., provides historic route markers to act as a wayfinding tool to guide tourists and travelers on the 1926 alignment to a local agency; and

WHEREAS, Designation of a Historic Route and the permission of placement of historic markers on State Public Highways must come from the Iowa Department of Transportation; and

WHEREAS, Without formal designation, the history and contribution of these segments of U.S. Highway Route 20 to the development of the state would remain less known; and

WHEREAS, Recognition of these segments will foster the economic health and cultural preservation of small communities and towns located along the highway; and

WHEREAS, It is fitting that a means to designate these historic sections of former U.S. Highway Route 20 be established; now, therefore, be it

RESOLVED by the City of Cushing, Iowa, hereby recognizes the original 1926 segment of former U.S. Highway Route 20 in the Cushing, Iowa as *Historic Route 20 (Iowa)* for its historical significance and importance in the development of Iowa; and be it further

RESOLVED, Cushing, Iowa commits to the permitting and placement of Historic Route 20 Markers within its borders, including the State DOT Highway; and be it further

RESOLVED, That the Iowa Department of Transportation, upon receipt of this resolution by all interested local agencies along the original segment of U.S. Highway Route 20, to designate that section of highway as *Historic Route 20 (Iowa)*; and be it further

RESOLVED, That the local agency is responsible for the costs and placement of historic route markers on their sections or portions of former U.S. Highway Route 20 – unless stipulated by the Iowa Department of Transportation to the local agency, and be it further

RESOLVED the Clerk of Cushing, Iowa transmit copies of this resolution to the Historic US Route 20 Association and the requesting local agency.

NOW, THEREFORE, BE IT HEREBY RESOLVED BY THE Mayor of the City of Cushing, IOWA that we are in support of the recognition and designation of Historic Route 20 and the placement of Historic Route 20 Markers.

PASSED AND APPROVED this 6th of July, 2017

Don Joy Sr - mayor

Deide Heisinga - city clerk

RESOLUTION NUMBER 2017-28

A Resolution of City of Correctionville, Iowa - Declaring Support and Intent of the Placement of Historic Route 20 Signage on the Town/City/County/State Maintained Road

COUNCILPERSON **Petty** introduced and moved for the adoption of the following resolution:

WHEREAS, U.S. Highway Route 20 was created in 1926 from Boston, MA to Yellowstone National Park, WY; and

WHEREAS, By 1943, U.S. Highway Route 20 was extended to Newport, OR – a distance of 3,365 miles; and

WHEREAS, U.S. Highway Route 20 extended 333 miles between Dubuque and Sioux City, Iowa; and

WHEREAS, U.S. Highway Route 6 was decommissioned in most of California in 1964, making U.S. Highway Route 20 the longest highway in the country; and

WHEREAS, Over the years, U.S. Highway Route 20 has conveyed commerce and pleasure travelers whose needs were met by nearby cities and counties; and

WHEREAS, The State of Iowa has been working since 1952, to relocate U.S. Highway Route 20 to a four lane highway; and

WHEREAS, Though largely supplanted by the four lane highway route, the original segment of U.S. Highway Route 20 remain, although most are no longer identified as such; and

WHEREAS, Former U.S. Highway Route 20 served as the main street of many Iowa cities and towns along its length and, though no longer designated as former U.S. Highway Route 20, these segments represent both state and local historic significance; and

WHEREAS, the Historic US Route 20 Association, Inc., is a nonprofit 501 (c)3 organization aimed to promote tourism and economic development along the original 1926 alignment of US Route 20; and

WHEREAS, The Historic Route 20 Association, Inc., provides historic route markers to act as a wayfinding tool to guide tourists and travelers on the 1926 alignment to a local agency; and

WHEREAS, Designation of a Historic Route and the permission of placement of historic markers on State Public Highways must come from the Iowa Department of Transportation; and

WHEREAS, Without formal designation, the history and contribution of these segments of U.S. Highway Route 20 to the development of the state would remain less known; and

WHEREAS, Recognition of these segments will foster the economic health and cultural preservation of small communities and towns located along the highway; and

WHEREAS, It is fitting that a means to designate these historic sections of former U.S. Highway Route 20 be established; now, therefore, be it

RESOLVED by the City of Correctionville, Iowa, hereby recognizes the original 1926 segment of former U.S. Highway Route 20 in the City of Correctionville, Iowa as *Historic Route 20 (Iowa)* for its historical significance and importance in the development of Iowa; and be it further

RESOLVED, City of Correctionville, Iowa commits to the permitting and placement of Historic Route 20 Markers within its borders, including the State DOT Highway; and be it further

RESOLVED, That the Iowa Department of Transportation, upon receipt of this resolution by all interested local agencies along the original segment of U.S. Highway Route 20, to designate that section of highway as *Historic Route 20 (Iowa)*; and be it further

RESOLVED, That the local agency is responsible for the costs and placement of historic route markers on their sections or portions of former U.S. Highway Route 20 – unless stipulated by the Iowa Department of Transportation to the local agency, and be it further

RESOLVED the Clerk of City of Correctionville, Iowa transmit copies of this resolution to the Iowa Department of Transportation, Historic US Route 20 Association and the requesting local agency.

NOW, THEREFORE, BE IT HEREBY RESOLVED BY THE CITY COUNCIL of the CITY OF CORRECTIONVILLE, IOWA that we are in support of the recognition and designation of Historic Route 20 and the placement of Historic Route 20 Markers.

COUNCILPERSON **Lennon** seconded the motion to adopt the foregoing resolution and, upon the question being put and the roll being called, the following Councilpersons voted:

AYE: Hansen, Lennon, Petty, Duncan.

NAY: None.

ABSENT: Knaack.

ABSTAIN: None.

PASSED AND APPROVED this 8TH day of May, 2017.



NATHAN HEILMAN, Mayor

ATTEST: 
CARLA MATHERS, Deputy Clerk

RESOLUTION NO. 2018 - 0413

RESOLUTION DECLARING SUPPORT AND INTENT OF THE PLACEMENT OF HISTORIC ROUTE 20 SIGNAGE ON CITY OF SIOUX CITY MAINTAINED ROADS

WHEREAS, U.S. Highway Route 20 was created in 1926 from Boston, Massachusetts to Yellowstone National Park, Wyoming; and

WHEREAS, by 1943, U.S. Highway Route 20 was extended to Newport, Oregon, a distance of 3,365 miles; and

WHEREAS, U.S. Highway Route 20 extended 333 miles between Dubuque, Iowa and Sioux City, Iowa; and

WHEREAS, U.S. Highway Route 6 was decommissioned in most of California in 1964, making U.S. Highway Route 20 the longest highway in the country; and

WHEREAS, over the years, U.S. Highway Route 20 has conveyed commerce and pleasure travelers whose needs were met by nearby cities and counties; and

WHEREAS, the State of Iowa has been working since 1952 to relocate U.S. Highway Route 20 to a four-lane highway; and

WHEREAS, though largely supplanted by the four-lane highway route, the original segment of U.S. Highway Route 20 remains, although most are no longer identified as such; and

WHEREAS, former U.S. Highway Route 20 served as the main street of many Iowa cities and towns along its length and, though no longer designated as former U.S. Highway Route 20, these segments represent both State and local historic significance; and

WHEREAS, the Historic U.S. Route 20 Association, Inc. is a nonprofit 501(c)3 organization aimed to promote tourism and economic development along the original 1926 alignment of U.S. Highway Route 20; and

WHEREAS, the Historic U.S. Route 20 Association, Inc. provides historic route markers to act as a wayfinding tool to guide tourists and travelers on the 1926 alignment to a local agency; and

WHEREAS, designation of a Historic Route and the permission of placement of historic markers on State public highways must come from the Iowa Department of Transportation; and

WHEREAS, without formal designation, the history and contribution of these segments of U.S. Highway Route 20 to the development of the State would remain less known; and

WHEREAS, recognition of these segments will foster the economic health and cultural preservation of small communities and towns located along the highway; and

WHEREAS, it is fitting that a means to designate these historic sections of former U.S. Highway Route 20 be established; and

WHEREAS, the Iowa Department of Transportation, upon receipt of resolutions by all interested local agencies along the original segment of U.S. Highway Route 20, shall designate these segments of highway as Historic Route 20 (Iowa).

NOW, THEREFORE, BE IT RESOLVED BY THE CITY COUNCIL OF THE CITY OF SIOUX CITY, IOWA that the City Council hereby recognizes the original 1926 segment of former U.S. Highway Route 20 in the City of Sioux City as Historic Route 20 (Iowa) for its historical significance and importance in the development of Iowa and the City Council hereby supports the recognition and designation of Historic Route 20 and the placement of Historic Route 20 Markers.

BE IT FURTHER RESOLVED that the City of Sioux City, Iowa commits to the permitting and placement of Historic Route 20 Markers within its borders, including the State Department of Transportation Highway.

BE IT FURTHER RESOLVED that the City Clerk of the City of Sioux City, Iowa shall transmit copies of this resolution to the Historic U.S. Route 20 Association and any requesting local agency.

PASSED AND APPROVED: June 4, 2018



Robert E. Scott, Mayor

ATTEST: 

Lisa L. McCardle, City Clerk